

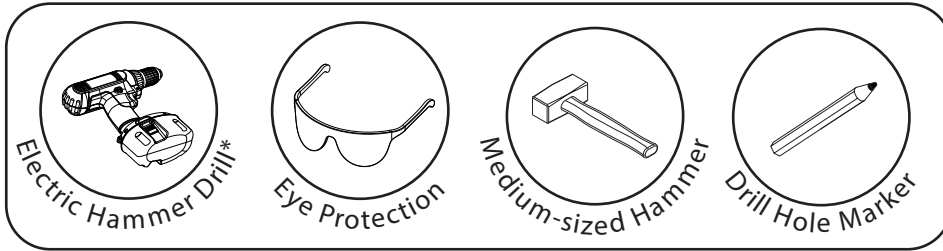


Torc Mega/Maxi for Concrete - Fitting Overview

Aimed at **experienced/professional installers**

If less familiar with this installation, detailed instructions can be requested from your supplier.

Required Tools

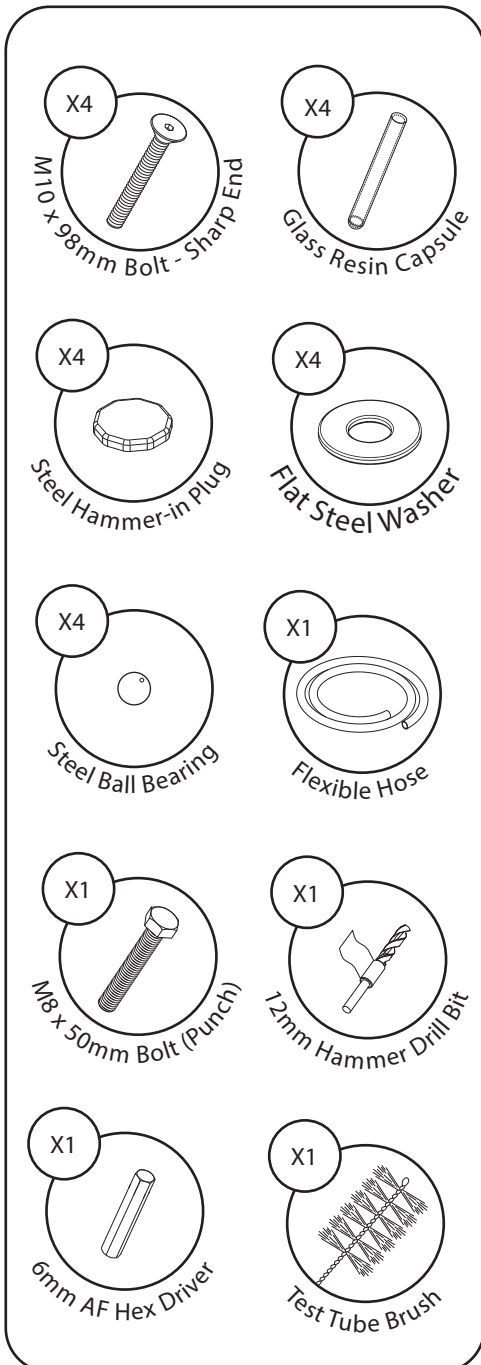


Must be used with an appropriately fitted Sold Secure approved lock and chain.



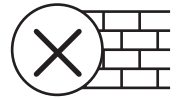
Takes 24 hours to set - Use next day.

Included Parts



Choosing a Surface

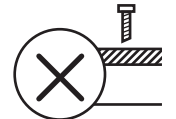
Concrete is stronger than brick.
Brick is stronger than block. We provide other fitting kits for other substrates.



Minimum concrete thickness is 120mm.
We recommend 150mm.



Do not fit the anchor to Tarmac or other soft surfaces, even if there is concrete below.



Choosing a Location

Check location is clear of pipes, cables, etc.
We suggest using a pipe/cable detector.



Placing the anchor near a corner or somewhere that restricts access to the anchor makes it harder for criminals.



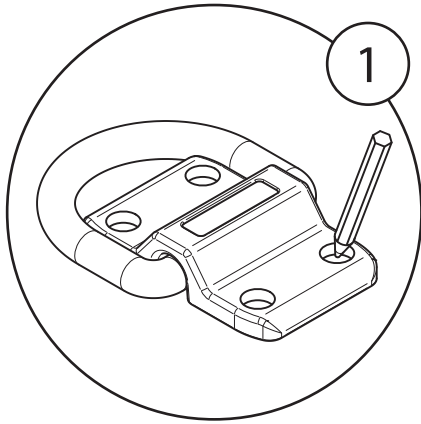
Make sure you can actually fit the chain and lock before committing!



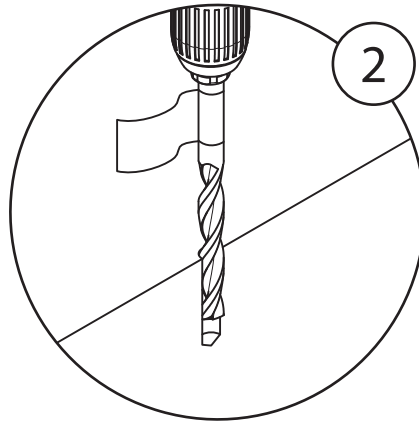
* Must have at least a 12mm chuck capacity (ideally variable speed)

Fitting Sequence

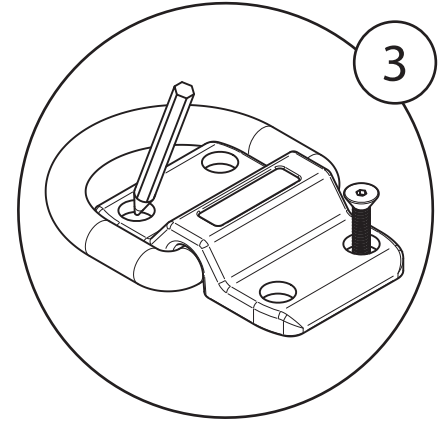
Check the fitting location using page 1.
This is a **PERMANENT** installation.



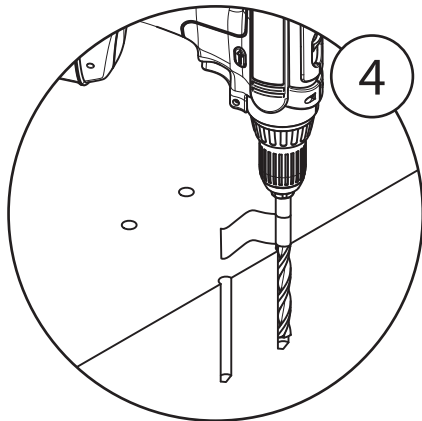
Place the anchor at an appropriate location (see page 1), check the D-Shackle fits, and mark a hole to drill.



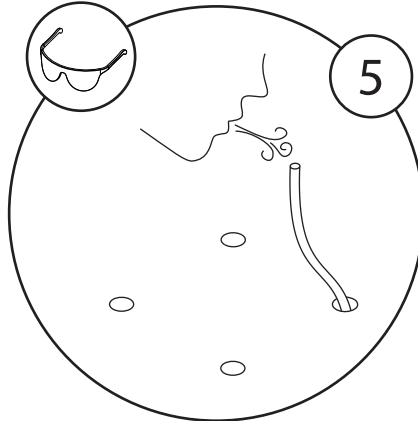
Drill the hole perpendicular to the surface about half way to the tape. Do not drill to the tape yet. If it is difficult to keep the drill positioned, drill an 8mm pilot hole first.



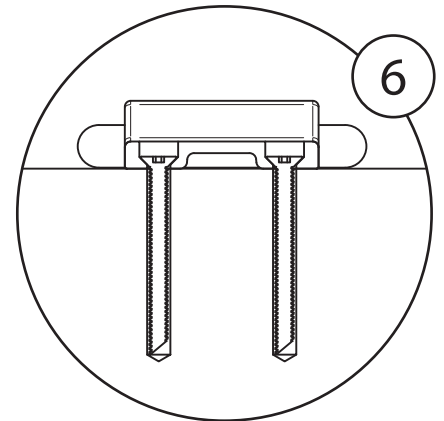
Place a bolt in the drilled hole for stability and mark the diagonally opposite hole. Repeat steps 1 - 3 until all holes are part-drilled.



Move the anchor and drill the holes until the tape touches the mounting surface (95mm depth). Do not drill too deep.



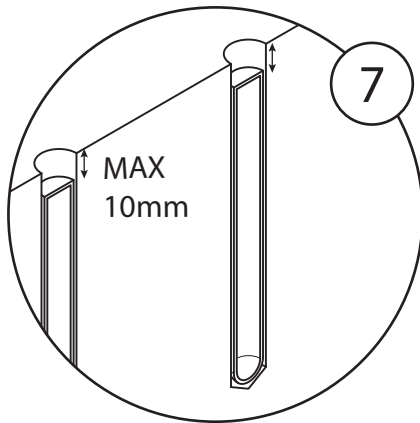
Use the tube to blow dust from the holes and use the test tube brush and a vacuum cleaner to clear remaining dust. **HOLES MUST BE FREE OF DUST.**



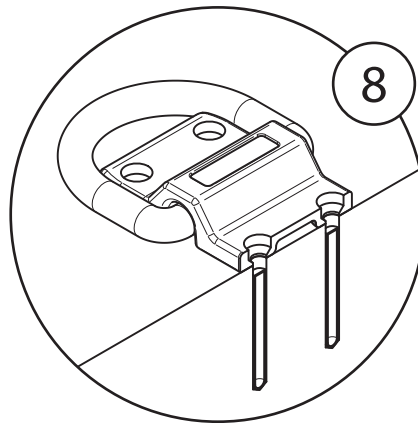
Place the anchor over the drilled, cleaned holes, and insert the bolts to check the holes are deep enough.

Fitting Sequence

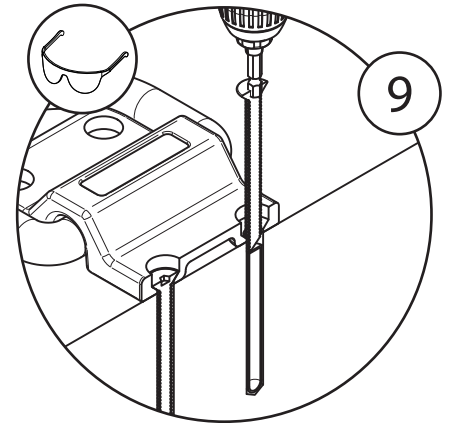
Remove bolts



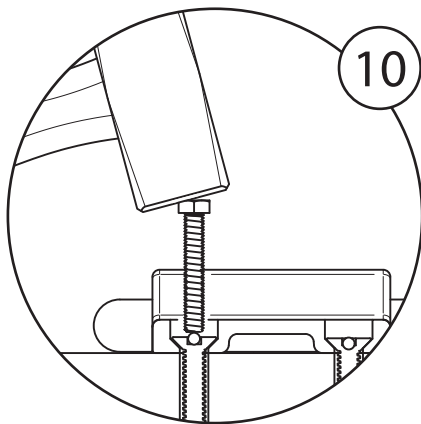
Gently slide the resin capsules into the holes with the flat end facing upwards. There must be no more than 10mm clearance at the top.



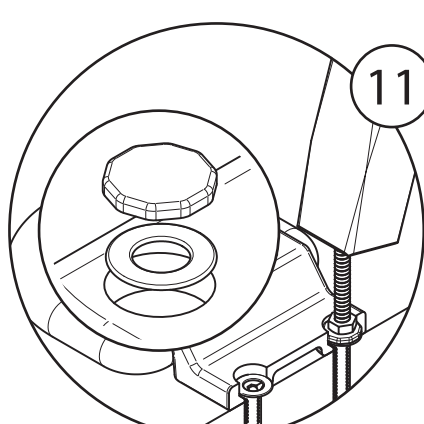
Place the anchor, **WITH THE D-SHACKLE**, over the holes. Prepare to fit all bolts within 5 minutes. Ensure any cordless drill is charged.



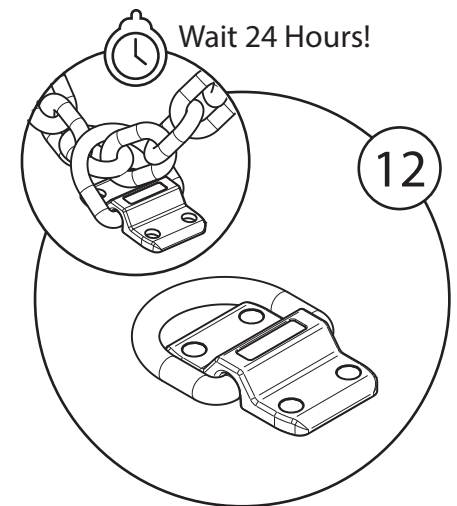
Using **ONLY** a hammer drill set to its lowest speed on hammer action, use the 6mm hex drive bit (thin end down) to spin the bolts into the resin capsules. Go all the way down in one go. Do not over drill.



Check the bolts are fully home and place ball bearings in the heads. Using the smaller M8 bolt as a punch, hammer the bearings in.



Place a washer and then a hammer-in plug in each hole. Use the M8 bolt again to hammer the plugs in firmly.



The Torc Ground Anchor is now installed. Please leave 24 hours before disturbing it or using it so the resin can set fully.